

# Boomer BOOM SYSTEMS

STANDARD BOOMS ENGINEERED FOR  
LIGHT-TO-HEAVY INDUSTRIES



## LIGHT TO MEDIUM DUTY BOOMS FOR MOBILE CRUSHERS

### LIGHT DUTY FEATURES

- ▶ Compact and light weight design
- ▶ Maintenance free cylinder bearings
- ▶ Pin lock system
- ▶ 270° slew bearing
- ▶ Internal hydraulic lines

### BENEFITS

- ▶ Easy mobile crusher integration
- ▶ Higher machine availability
- ▶ Higher machine availability
- ▶ Wider coverage and service access
- ▶ Damage protection

### MEDIUM DUTY ADDITIONAL FEATURES

- ▶ Light duty boom structure
- ▶ Load distribution plates
- ▶ Large diameter pins
- ▶ 3 boom sections, B17/12/12
- ▶ Rock breaking and light raking capability
- ▶ Longer service life
- ▶ Reduced wear and tear
- ▶ Small parking radius and more flexible reach



LIGHT DUTY MODELS	B17/11	B16/12	B16/16
Maximum reach (incl. nominal breaker), m	4.0	4.8	5.2
Horizontal reach, max (breaker vertical), m	2.9	3.1	3.4
Vertical reach, max (incl. nominal breaker), m	1.8	3.2	4.1
Recommended breaker weight, kg	200-400	250-600	250-600
Operating mass, excluding breaker powerpack and control console, kg	1000	1335	1400



MEDIUM DUTY MODELS	B17/12	B17/12/12
Maximum reach (incl. nominal breaker), m	4.6	5.8
Horizontal reach, max (breaker vertical), m	3.1	4.4
Vertical reach, max (incl. nominal breaker), m	2.4	3.7
Recommended breaker weight, kg	300-600	
Operating mass, excluding breaker powerpack and control console, kg	1450	1680

## LIGHT TO MEDIUM DUTY BOOMS FOR JAW CRUSHERS

### FEATURES

- ▶ Light to medium boom structure
- ▶ Specially designed geometry
- ▶ Maintenance free cylinder bearings
- ▶ Pin lock system
- ▶ 170° cylinder slew
- ▶ Flexible hydraulic lines

### BENEFITS

- ▶ Rockbreaking and light to medium raking capabilities
- ▶ Optimized for jaw crushers
- ▶ Higher machine availability
- ▶ Easy maintenance
- ▶ Longer horizontal reach
- ▶ Easy repair



LIGHT DUTY MODELS	B20/14	B20/19	B20/22	B32/19	B32/22	B32/27
Maximum reach (incl. nominal breaker), m	6.0	6.5	6.8	7.7	7.7	8.4
Horizontal reach, max (breaker vertical), m	3.9	4.3	4.6	5.6	5.8	6.2
Vertical reach, max (incl. nominal breaker), m	4.3	4.8	5.1	5.5	5.5	6.3
Recommended breaker weight, kg	400-1000					
Operating mass, excluding breaker powerpack and control console, kg	2500	2550	2600	2650	2700	2750

MEDIUM DUTY MODELS	B26/17+	B35/20+	B35/28+
Maximum reach (incl. nominal breaker), m	6.9	7.9	8.6
Horizontal reach, max (breaker vertical), m	5.0	6.0	6.7
Vertical reach, max (incl. nominal breaker), m	3.2	4.6	5.3
Recommended breaker weight, kg	1000-2000		
Operating mass, excluding breaker powerpack and control console, kg	6300	6830	7130

## HEAVY DUTY BOOMS FOR GRYRATORY CRUSHERS

### FEATURES

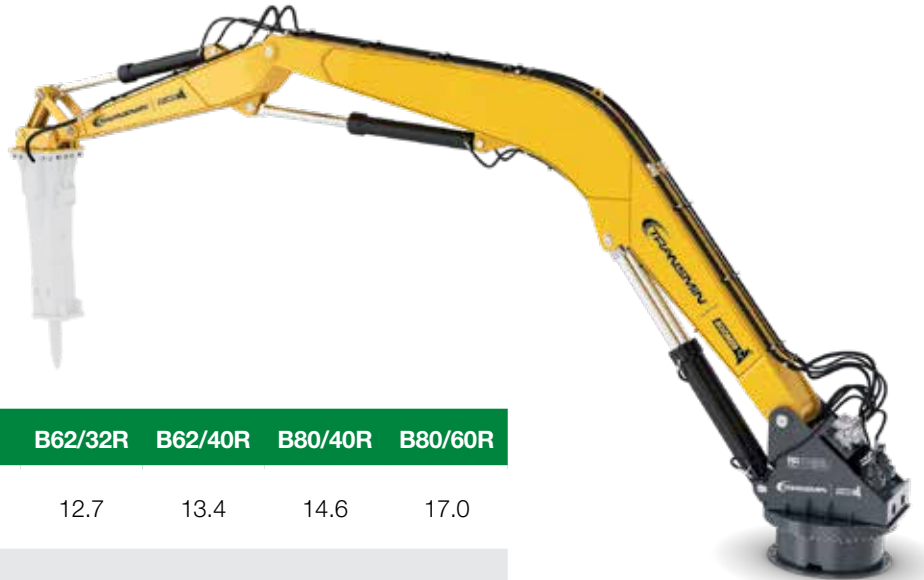
- ▶ Heavy duty boom structure
- ▶ High tensile load distribution plates
- ▶ Large diameter pins
- ▶ Pin lock system
- ▶ 170° cylinder slew
- ▶ 270° slew bearing

### BENEFITS

- ▶ Hard rock breaking and heavy raking capability
- ▶ Longer service life
- ▶ Reduced wear and tear
- ▶ Higher machine availability
- ▶ Longer horizontal reach
- ▶ Wider coverage and service access



HEAVY DUTY MODELS - CYLINDER SLEW	B62/32	B62/40	B80/40	B80/60
Maximum reach (incl. nominal breaker), m	12.7	13.4	14.6	17.0
Horizontal reach, max (breaker vertical), m	9.8	10.5	12.2	14.1
Vertical reach, max (incl. nominal breaker), m	9.2	10.0	10.6	13.2
Recommended breaker weight, kg	1500-3500			
Operating mass, excluding breaker powerpack and control console, kg	15100	15500	16500	17500



HEAVY DUTY MODELS - SLEW BEARING	B62/32R	B62/40R	B80/40R	B80/60R
Maximum reach (incl. nominal breaker), m	12.7	13.4	14.6	17.0
Horizontal reach, max (breaker vertical), m	9.8	10.5	12.2	14.1
Vertical reach, max (incl. nominal breaker), m	9.2	10.0	10.6	13.2
Recommended breaker weight, kg	1500-3500			
Operating mass, excluding breaker powerpack and control console, kg	11100	11500	12500	13500

## HEAVY DUTY BOOMS FOR GRIZZLY

### FEATURES

- ▶ Heavy duty boom structure
- ▶ High tensile load distribution plates
- ▶ Large diameter pins
- ▶ Pin lock system
- ▶ Top mounted tilt-cylinder
- ▶ 170° cylinder slew

### BENEFITS

- ▶ Hard rock breaking and heavy raking capability
- ▶ Longer service life
- ▶ Reduced wear and tear
- ▶ Higher machine availability
- ▶ Fly-rock protection
- ▶ Longer horizontal reach



### HEAVY DUTY MODELS - CYLINDER SLEW

	B30/20+	B30/30+	B45/30+
Maximum reach (incl. nominal breaker), m	8.0	9.0	10.1
Horizontal reach, max (breaker vertical), m	5.5	6.4	8.0
Vertical reach, max (incl. nominal breaker), m	5.1	6.1	6.5
Recommended breaker weight, kg	1200-2500		
Operating mass, excluding breaker powerpack and control console, kg	7250	7400	7800

## EXTREME DUTY BOOMS FOR GRIZZLY

### FEATURES

- ▶ Extreme duty boom structure
- ▶ High tensile load distribution plates
- ▶ Large diameter pins
- ▶ Pin lock system
- ▶ Side mounted lift-cylinders
- ▶ Flexibase
- ▶ 270° slew bearing
- ▶ Flexible hydraulic lines

### BENEFITS

- ▶ Hard rock breaking and extreme raking capability
- ▶ Longer service life
- ▶ Reduced wear and tear
- ▶ Higher machine availability
- ▶ Raking stabilization
- ▶ Reduced vibration in foundation
- ▶ Wider coverage and service access
- ▶ Easy repair



### EXTREME DUTY MODELS - SLEW BEARING

	B27/35R	B35/35R
Maximum reach (incl. nominal breaker), m	7.0	8.7
Horizontal reach, max (breaker vertical), m	5.4	6.5
Vertical reach, max (incl. nominal breaker), m	3.7	4.3
Recommended breaker weight, kg	750-1700	
Operating mass, excluding breaker powerpack and control console, kg	9350	9700

## MEDIUM DUTY BOOMS FOR SMALL GRIZZLY

### FEATURES

- ▶ Heavy to medium duty boom structure
- ▶ Low profile design
- ▶ Load distribution plates
- ▶ Maintenance free cyclinder bearings
- ▶ 270° slew bearing
- ▶ Internal hydraulic lines

### BENEFITS

- ▶ Hard rock breaking and medium raking capability
- ▶ Low headroom
- ▶ Longer service life
- ▶ Higher machine availability
- ▶ Wider coverage and service access
- ▶ Damage protection



### MEDIUM DUTY MODELS - SLEW BEARING

### B12/20GR

Maximum reach (incl. nominal breaker), m	4.4
Horizontal reach, max (breaker vertical), m	3.4
Vertical reach, max (incl. nominal breaker), m	1.7
Recommended breaker weight, kg	300-500
Operating mass, excluding breaker powerpack and control console, kg	1300

## CENTRALISED LUBRICATION

- ▶ Manual centralised lubrication – creates a central point at the base of the boom system to allow lubrication of all pivot pins from a single point.
- ▶ Automatic centralised lubrication – creates a central point at the base of the boom system to allow lubrication of all pivot pins from a single point via an automatic grease pump.

## RADIO CONTROL

- ▶ Standard duty – utilises a belt and lightweight controller.
- ▶ Control cable 12m
- ▶ Valve harness 12m

## OTHER OPTIONS

- ▶ Oil heater
- ▶ Control chair
- ▶ Power pack hoses 12m
- ▶ Slew limiter kit
- ▶ Boom limiter kit
- ▶ Off-line oil filtering kit

## RADIO CONTROL SYSTEM MAIN COMPONENTS AND INTERCONNECTING CABLES



Base Unit



Radio Control Units



Batteries and Charger



Valve harness External

# HYDRAULIC POWERPACKS



MODELS	BPP18	BPP30	BPP37	BPP45	BPP55
Weight without oil, kg	800	900	950	1200	1310
Length, mm	1680				
Width, mm	1100				
Height, mm	1890				
Oil tank volume, l	250	250	250	400	400
Hydraulic pump type	Gear				
Oil flow, l/min 1500 rpm (50Hz)	65	90	125	180	220
Oil flow, l/min 1800 rpm (60Hz)	78	108	150	216	264
Motor power, 50Hz	18	30	37	45	55
Motor power, 60Hz	22	36	45	55	66





**HEAD OFFICE**

**Western Australia**

**Local Call:** 1300 127 091

**International Call:** +61 (0) 8 9270 8555

**Email:** wasales@transmin.com.au

**Address:** 33-37 Denninup Way Malaga  
Perth, Western Australia, 6090

**Queensland & Northern Territory**

**Local Call:** 1300 800 609

**International Call:** +61 (0) 7 3736 3340

**Email:** qldsales@transmin.com.au

**Address:** 76 Dulacca Street  
Acacia Ridge, Brisbane  
Queensland, 4110

**INTERNATIONAL OFFICES**

**South America**

**Email:** sales.sa@transmin.com.au

**North America**

**Email:** sales.ca@transmin.com.au

**India**

**Email:** sales.in@transmin.in

[www.transmin.com.au](http://www.transmin.com.au)



Committed to being a  
world class supplier and service provider  
recognised for integrity and innovation

