

B62/32 | B62/40 | B80/40 | B80/60

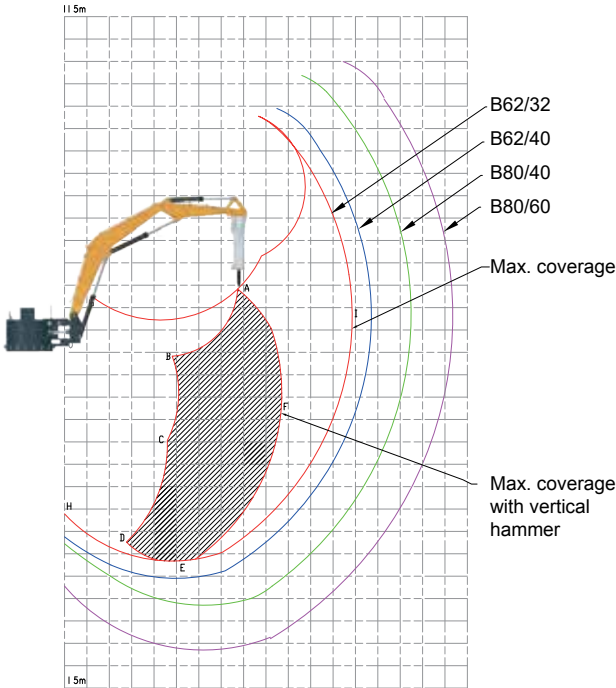


FOR HEAVY DUTY GYRATORY APPLICATIONS

MODELS	B62/32	B62/40	B80/40	B80/60
Maximum reach (incl. nominal breaker), m	12.7	13.4	14.6	17.0
Horizontal reach, max (breaker vertical), m	9.8	10.5	12.2	14.1
Vertical reach, max (incl. nominal breaker), m	9.2	10.0	10.6	13.2
Nominal breaker length, m		2.9		
Swing		170		
Number of boom sections		2		
Operating mass, excluding breaker PowerPack and control console, kg	15100	15500	16500	17500
Recommended breaker weight, kg		1500-3500		
Foundation plate dimension, m		2.29		
Lift boom length, m	6.2	6.2	8.0	8.0
Dipper boom length, m	3.2	4.0	4.0	6.0
Dipper extension boom length, m		n/a		
Radial raking max, kg		n/a		
Axial raking max, kg		n/a		

B62/32, B62/40, B80/40, B80/60

REACH CURVES



COORDINATES	B62/32	B62/40	B80/40	B80/60
A	7.7 ; 2.8	8.5 ; 2.8	9.7 ; 4.1	11.7 ; 4.5
B	4.8 ; -0.2	4.9 ; 1.0	6.0 ; 0.3	6.2 ; -1.1
C	4.6 ; -3.9	4.0 ; -4.7	5.8 ; -4.5	4.4 ; 5.5
D	2.8 ; -8.5	2.3 ; -8.9	3.6 ; -10.2	2.0 ; -11.3
E	4.9 ; -9.3	4.9 ; -10.2	6.3 ; -11.5	6.3 ; -13.0
F	9.7 ; -2.0	10.5 ; -2.0	12.2 ; -2.0	14.1 ; -2.0
G	1.2 ; 2.5	1.3 ; 1.7	2.4 ; 3.1	3.0 ; 1.2
H	0.0 ; -7.6	0.0 ; -8.4	0.0 ; -8.4	0.0 ; -10.4
I	12.9 ; 1.8	13.6 ; 1.4	15.3 ; 1.4	16.8 ; 1.4

Reach coordinates (x ; y) based on the typical breaker length.

BREAKER WEIGHT - POWERPACK REFERENCE (50Hz)

	B62/32	B62/40	B80/40	B80/60
15001 - 1999kg			BPP37	
2000 - 2999kg			BPP45	
3000 - 3500kg			BPP55	

CONFIGURATION	B62/32	B62/40	B80/40	B80/60
Hydraulic breaker			-	
Powerpack			o	
Control seat			+	
Control stand			-	
Radio remote control			o	
Autolube			+	
Hosetower			-	
Flexibase			-	
Hour meter breaker			-	
Cabin, protection glass			-	

• standard o option + accessory - not available
More about the boom accessories see separate brochure.

HEAD OFFICE

Western Australia

Local Call: 1300 127 091

International Call: +61 (0) 8 9270 8555

Email: wasales@transmin.com.au

Address: 33-37 Denninup Way Malaga
Perth, Western Australia, 6090

INTERNATIONAL OFFICES

South America Email: sales.sa@transmin.com.au

North America Email: sales.ca@transmin.com.au

India Email: sales.in@transmin.in

www.transmin.com.au



Western Australia:
breakerswa@baeg.com.au

Queensland & NT:
breakersqld@baeg.com.au

B62/32R | B62/40R | B80/40R | B80/60R

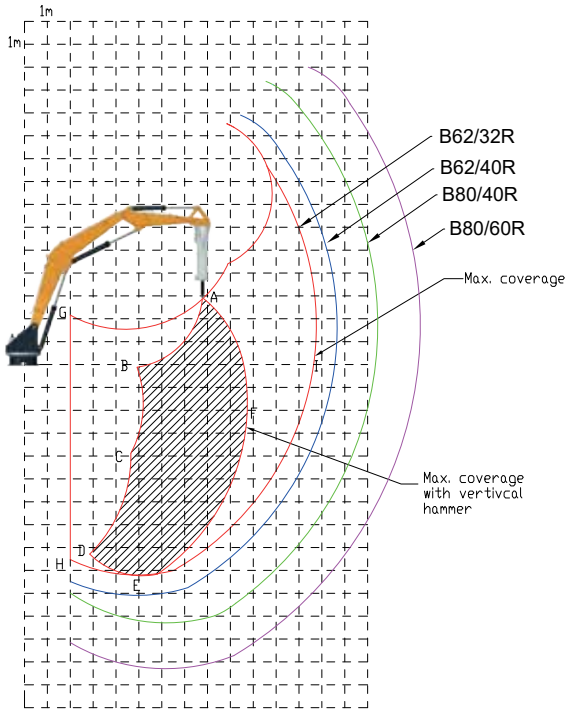


FOR HEAVY DUTY GYRATORY APPLICATIONS

MODELS	B62/32R	B62/40R	B80/40R	B80/60R
Maximum reach (incl. nominal breaker), m	12.7	13.4	14.6	17.0
Horizontal reach, max (breaker vertical), m	9.8	10.5	12.2	14.1
Vertical reach, max (incl. nominal breaker), m	9.2	10.0	10.6	13.2
Nominal breaker length, m			2.9	
Swing			270	
Number of boom sections			2	
Operating mass, excluding breaker PowerPack and control console, kg	11100	11500	12500	13500
Recommended breaker weight, kg			1500-3500	
Foundation plate dimension, m			1.4	
Lift boom length, m	6.2	6.2	8.0	8.0
Dipper boom length, m	3.2	4.0	4.0	6.0
Dipper extension boom length, m			n/a	
Radial raking max, kg			n/a	
Axial raking max, kg			n/a	

B62/32R, B62/40R, B80/40R, B80/60R

REACH CURVES



COORDINATES	B62/32R	B62/40R	B80/40R	B80/60R
A	7.8 ; 2.9	8.6 ; 2.9	9.7 ; 4.3	11.7 ; 4.2
B	4.9 ; -0.1	5.0 ; -0.9	6.6 ; 0.6	6.3 ; -1.4
C	4.7 ; -3.9	4.0 ; -4.6	5.9 ; -4.4	4.4 ; -5.9
D	2.9 ; -8.3	2.4 ; -8.7	3.6 ; -10.1	2.2 ; -11.5
E	5.0 ; -9.2	5.0 ; -10.1	6.4 ; -11.3	6.4 ; -13.3
F	9.7 ; -1.7	10.5 ; -1.7	12.3 ; -1.7	14.1 ; -2.5
G	2.0 ; 2.2	2.0 ; 1.3	2.5 ; 3.2	2.0 ; 0.5
H	2.0 ; -8.5	2.0 ; -9.3	2.0 ; -10.0	2.0 ; -12.2
I	12.8 ; 1.5	13.5 ; 1.5	15.5 ; 1.5	17.3 ; 1.5

Reach coordinates (x ; y) based on the typical breaker length.

BREAKER WEIGHT - POWERPACK REFERENCE (50Hz)

	B62/32R	B62/40R	B80/40R	B80/60R
15001 - 1999kg			BPP37	
2000 - 2999kg			BPP45	
3000 - 3500kg			BPP55	

CONFIGURATION

	B62/32R	B62/40R	B80/40R	B80/60R
Hydraulic breaker			-	
Powerpack			o	
Control seat			+	
Control stand			-	
Radio remote control			o	
Autolube			+	
Hosetower			-	
Flexibase			-	
Hour meter breaker			-	
Cabin, protection glass			-	

• standard o option + accessory - not available
More about the boom accessories see separate brochure.

HEAD OFFICE

Western Australia

Local Call: 1300 127 091

International Call: +61 (0) 8 9270 8555

Email: wasales@transmin.com.au

Address: 33-37 Denninup Way Malaga
Perth, Western Australia, 6090

INTERNATIONAL OFFICES

South America Email: sales.sa@transmin.com.au

North America Email: sales.ca@transmin.com.au

India Email: sales.in@transmin.in

www.transmin.com.au



Western Australia:
breakerswa@baeg.com.au

Queensland & NT:
breakersqld@baeg.com.au